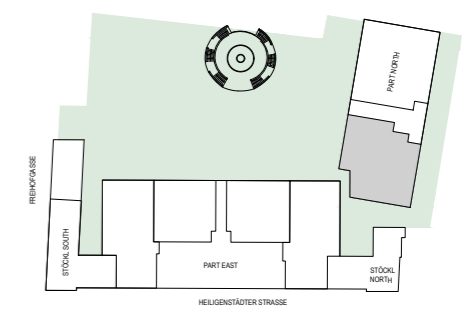


SCHLOSSPARK
FREIHOF

Living at Schlosspark Freihof
Part NORTH
Ground Floor - Top N1.01a

Living Space Ground F.	224.18 m ²
Terrace	80.70 m ²
Garden 1	75.63 m ²
Garden 2	88.32 m ²

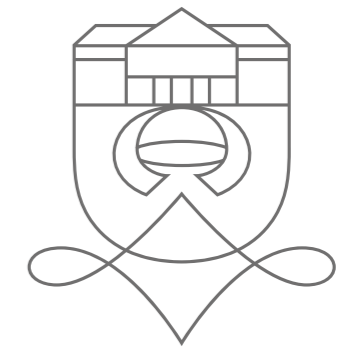
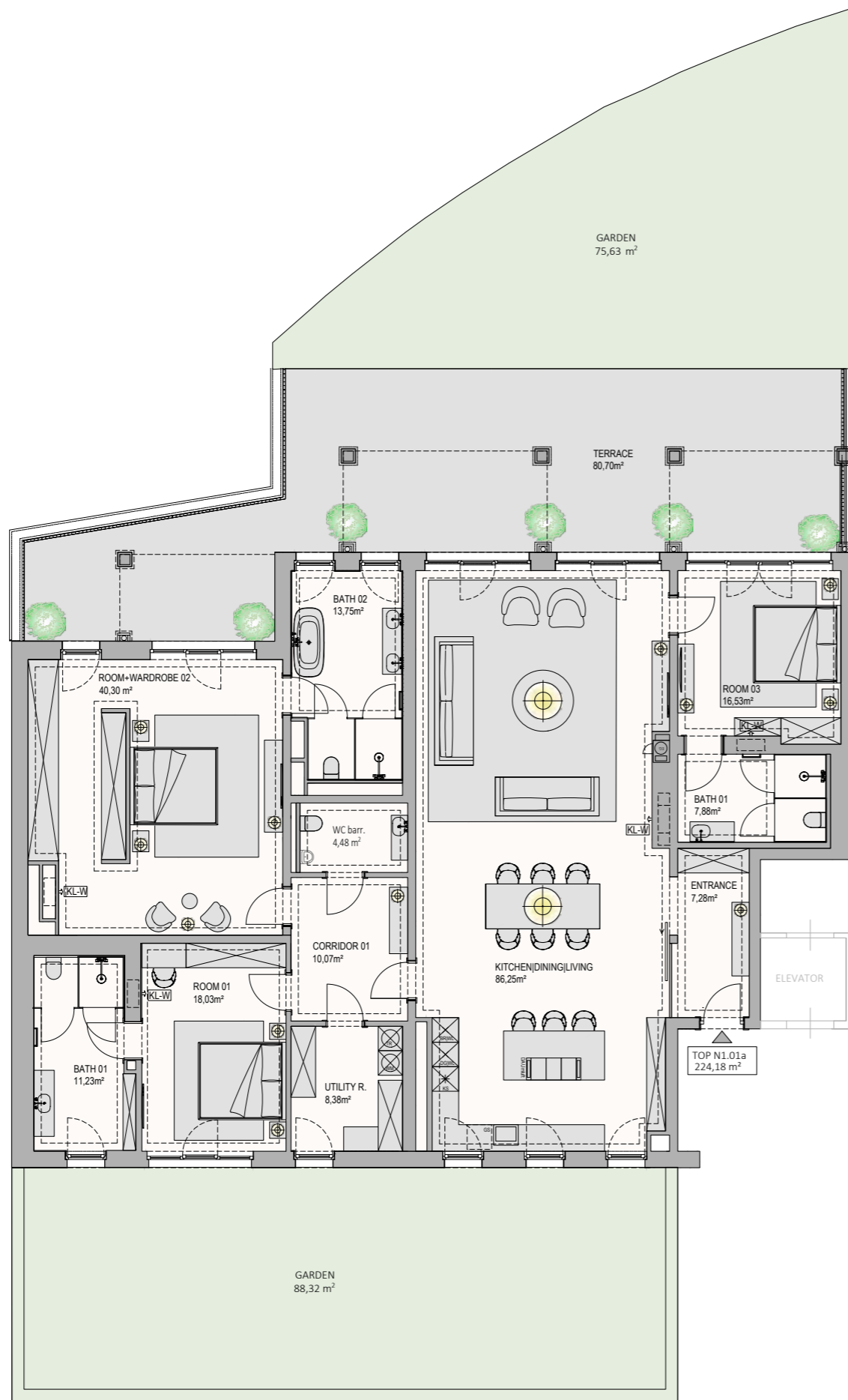
Room height=approx. 2.65 m



Plan status 3/2024. Non-binding plan copy. Subject to change without notice. The furniture shown is not part of the scope of delivery and serves only as a furnishing suggestion. All items shown are of a symbolic nature. The dimensions shown in this plan are rough dimensions and cannot be used for ordering built-in furniture—natural dimensions required! Room and apartment sizes and room heights may change slightly if necessary.

www.schlossparkfreihof.at
office@schlossparkfreihof.at

A project by **SORAVIA**

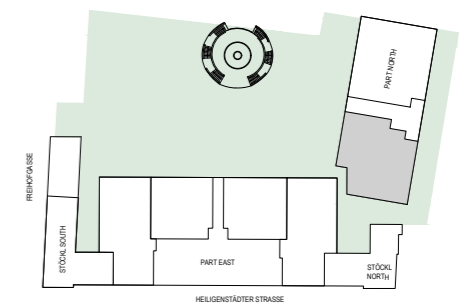


SCHLOSSPARK
FREIHOF

Living at Schlosspark Freihof
Part NORTH
Ground Floor - Top N1.01a

Living Space Ground F.	224.18 m ²
Terrace	80.70 m ²
Garden 1	75.63 m ²
Garden 2	88.32 m ²

Room height=approx. 2.65 m



Plan status 3/2024. Non-binding plan copy. Subject to change without notice. The furniture shown is not part of the scope of delivery and serves only as a furnishing suggestion. All items shown are of a symbolic nature. The dimensions shown in this plan are rough dimensions and cannot be used for ordering built-in furniture—natural dimensions required! Room and apartment sizes and room heights may change slightly if necessary.

www.schlossparkfreihof.at
office@schlossparkfreihof.at

A project by **SORAVIA**