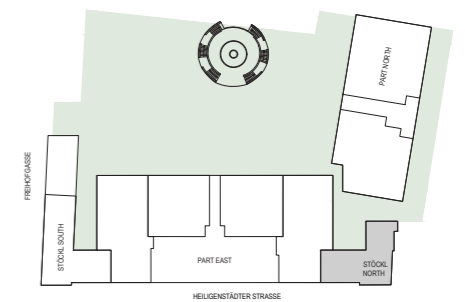


TOP STÖCKL - N
281,33m²

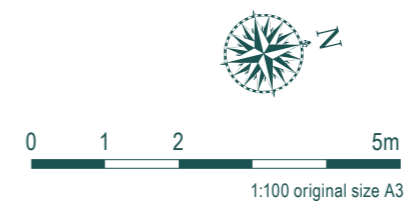
**Living at Schlosspark Freihof
Part EAST - STÖCKL NORTH
Ground Floor - N Top 01**

Living Space Cellar	24,10 m ²
Living Space Ground F.	14,97 m ²
Living Space G.F. Vault	75,22 m ²
Living Space First F.	167,07 m ²
Total Living Space	281,33 m²

Terrace	61,08 m ²
Roof Garden	58,41 m ²
Room height=ca.2,65 m	



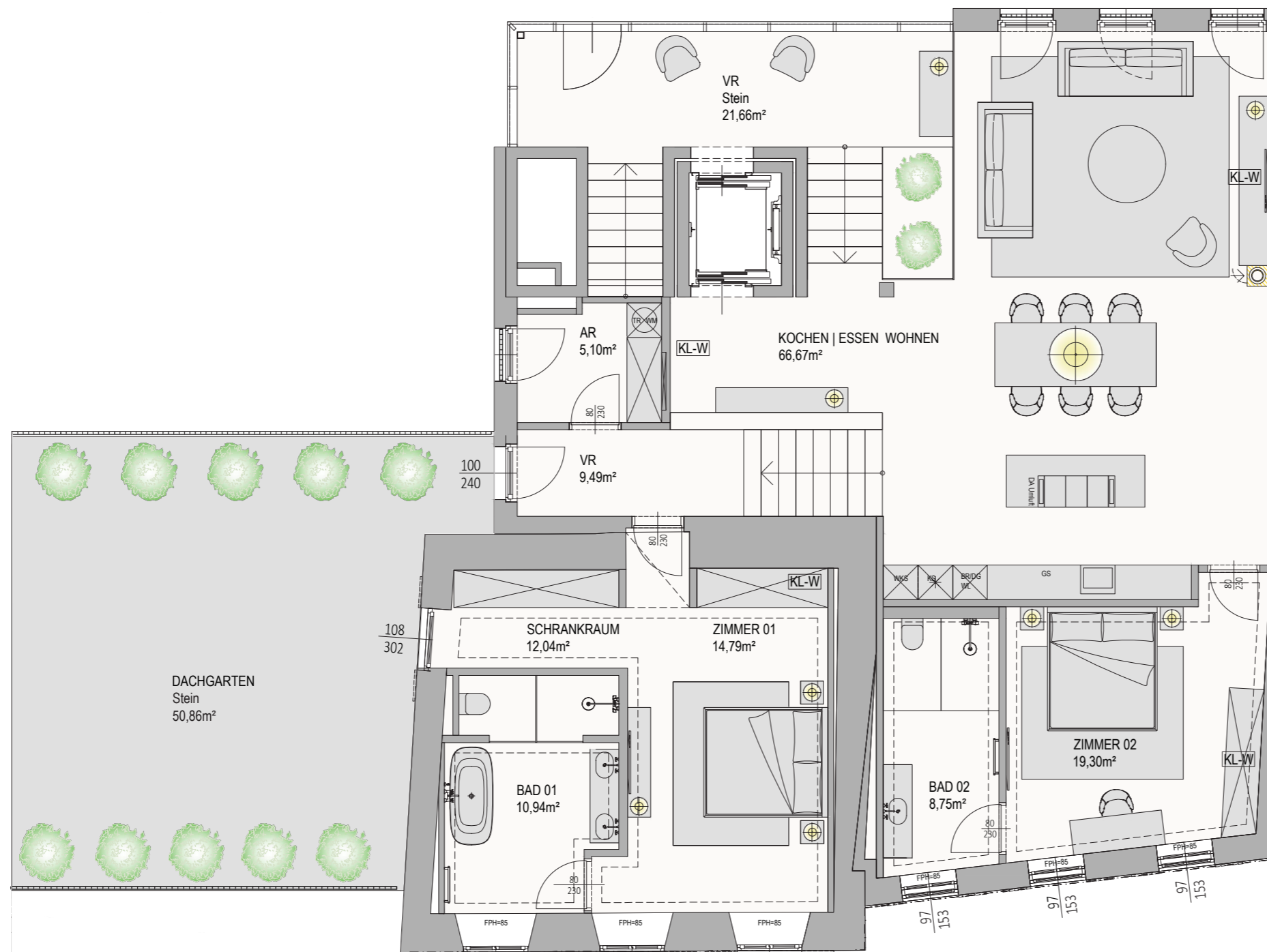
Plan status 02/2022. Non-binding plan copy. Subject to change without notice. The furniture shown is not part of the scope of delivery and serves only as a furnishing suggestion. All items shown are of a symbolic nature. The dimensions shown in this plan are rough dimensions and cannot be used for ordering built-in furniture - natural dimensions required! Room and apartment sizes and room heights may change slightly if necessary.



Exclusive Sale
Austria | **Sotheby's**
INTERNATIONAL REALTY

www.schlossparkfreihof.at
office@schlossparkfreihof.at

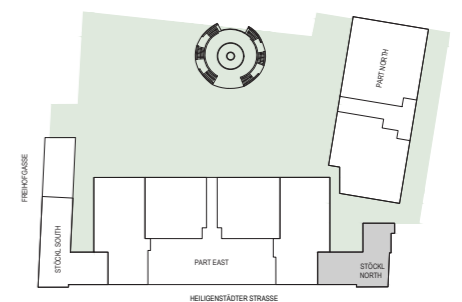
A project by **SORAVIA**



**Living at Schlosspark Freihof
Part EAST - STÖCKL NORTH
1st Floor - N Top 01**

Living Space Cellar	24,10 m ²
Living Space Ground F.	14,97 m ²
Living Space G.F. Vault	75,22 m ²
Living Space First F.	167,07 m ²
Total Living Space	281,33 m²

Terrace	61,08 m ²
Roof Garden	58,41 m ²
Room height=ca.2,65 m	



Plan status 02/2022. Non-binding plan copy. Subject to change without notice. The furniture shown is not part of the scope of delivery and serves only as a furnishing suggestion. All items shown are of a symbolic nature. The dimensions shown in this plan are rough dimensions and cannot be used for ordering built-in furniture - natural dimensions required! Room and apartment sizes and room heights may change slightly if necessary.

Exclusive Sale
Austria | **Sotheby's**
INTERNATIONAL REALTY

www.schlossparkfreihof.at
office@schlossparkfreihof.at

A project by **SORAVIA**