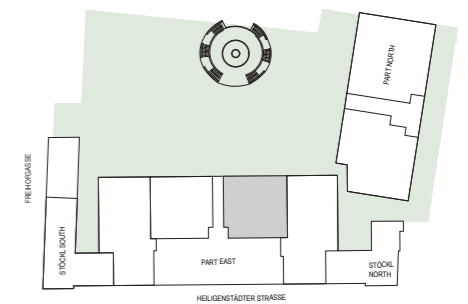
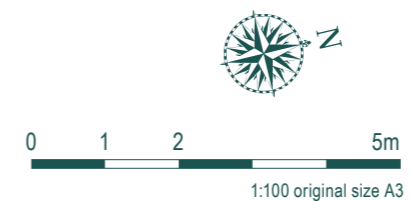


**Living at Schlosspark Freihof
Part EAST
Ground Floor - Top 02.01**

Living Space Ground F.	142,12 m ²
Living Space First F.	144,14 m ²
Total Living Space	286,26 m²
Balcony	26,03 m ²
Terrace	70,15 m ²
Roof terrace+gravel	106,44 m ²
Room height=ca.2,65 m	



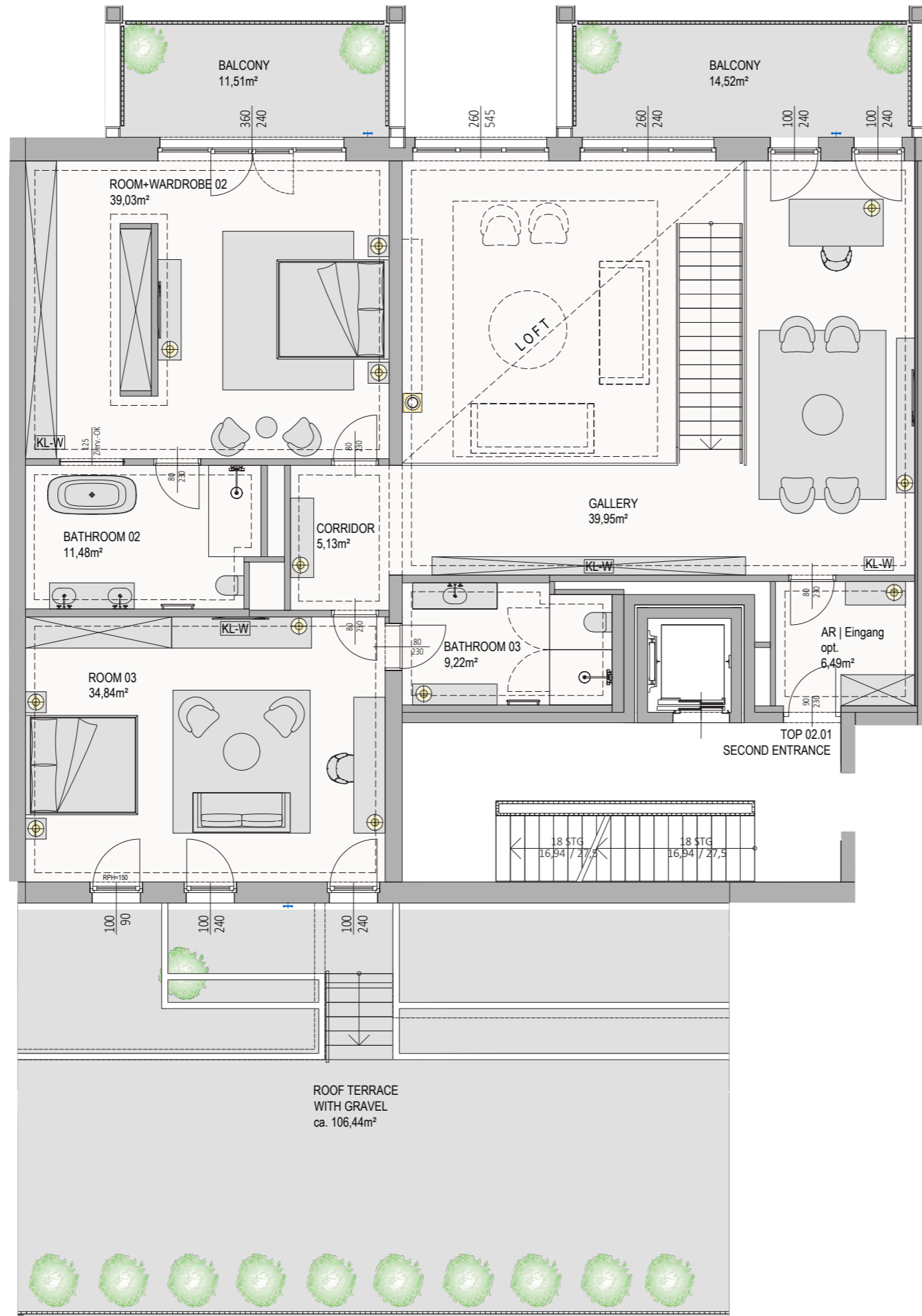
Plan status 02/2022. Non-binding plan copy. Subject to change without notice. The furniture shown is not part of the scope of delivery and serves only as a furnishing suggestion. All items shown are of a symbolic nature. The dimensions shown in this plan are rough dimensions and cannot be used for ordering built-in furniture - natural dimensions required! Room and apartment sizes and room heights may change slightly if necessary.



Exclusive Sale
Austria | **Sotheby's**
INTERNATIONAL REALTY

www.schlossparkfreihof.at
office@schlossparkfreihof.at

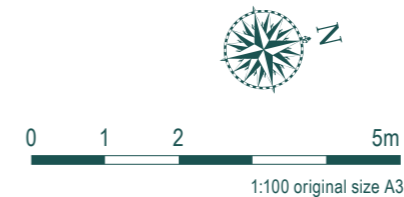
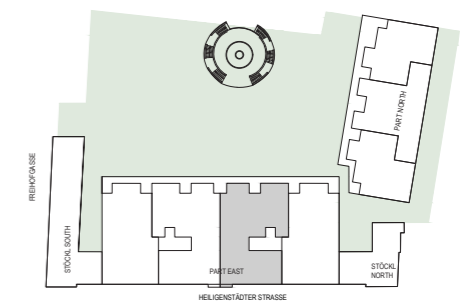
A project by **SORAVIA**



**Living at Schlosspark Freihof
Part EAST
First Floor - Top 02.01 - 2nd Entrance**

Living Space Ground F. 142,12 m²
 Living Space First F. 144,14 m²
Total Living Space 286,26 m²

Balcony 26,03 m²
 Terrace 70,15 m²
 Roof terrace+gravel 106,44 m²
 Room height=ca.2,65 m



Plan status 02/2022. Non-binding plan copy. Subject to change without notice. The furniture shown is not part of the scope of delivery and serves only as a furnishing suggestion. All items shown are of a symbolic nature. The dimensions shown in this plan are rough dimensions and cannot be used for ordering built-in furniture - natural dimensions required! Room and apartment sizes and room heights may change slightly if necessary.

Exclusive Sale
 Austria | **Sotheby's**
 INTERNATIONAL REALTY

www.schlossparkfreihof.at
office@schlossparkfreihof.at

A project by **SORAVIA**