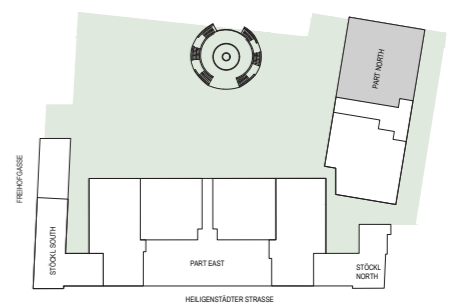


**Living at Schlosspark Freihof  
Part NORTH  
Ground Floor - Top N.02**

Living Space Ground F. 238,53 m<sup>2</sup>  
 Living Space First F. 107,36 m<sup>2</sup>  
**Total Living Space 345,89 m<sup>2</sup>**

Balcony 16,69 m<sup>2</sup>  
 Terrace 158,33 m<sup>2</sup>

Room height=ca.2,65 m



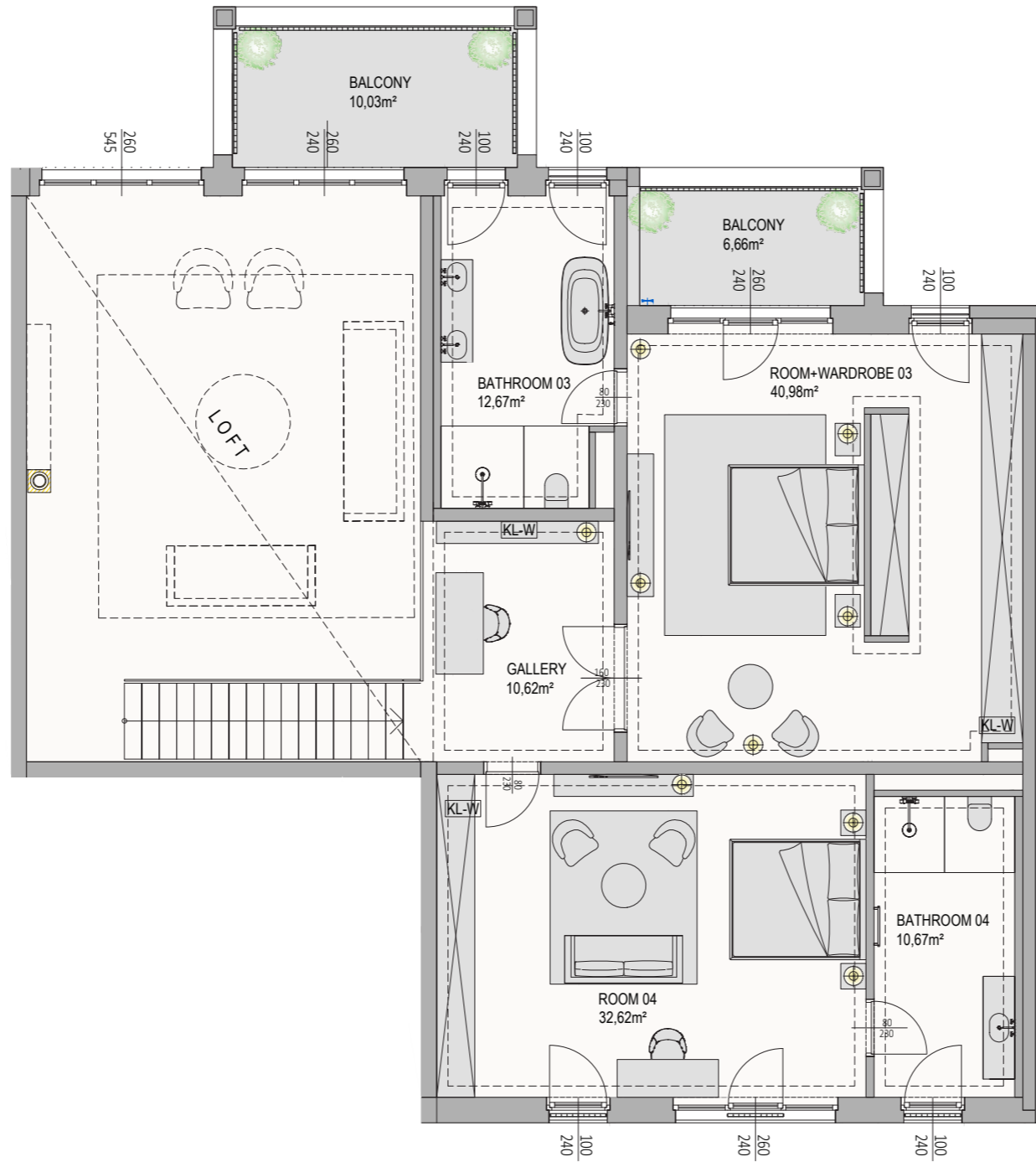
1:100 original size A3

Plan status 02/2022. Non-binding plan copy. Subject to change without notice. The furniture shown is not part of the scope of delivery and serves only as a furnishing suggestion. All items shown are of a symbolic nature. The dimensions shown in this plan are rough dimensions and cannot be used for ordering built-in furniture - natural dimensions required! Room and apartment sizes and room heights may change slightly if necessary.

Exclusive Sale  
 Austria | **Sotheby's**  
 INTERNATIONAL REALTY

[www.schlossparkfreihof.at](http://www.schlossparkfreihof.at)  
[office@schlossparkfreihof.at](mailto:office@schlossparkfreihof.at)

A project by **SORAVIA**

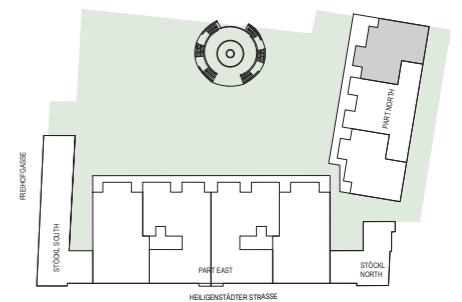


**Living at Schlosspark Freihof  
Part NORTH  
First Floor - Top N.02**

Living Space Ground F. 238,53 m<sup>2</sup>  
 Living Space First F. 107,36 m<sup>2</sup>  
**Total Living Space 345,89 m<sup>2</sup>**

Balcony 16,69 m<sup>2</sup>  
 Terrace 158,33 m<sup>2</sup>

Room height=ca.2,65 m



1:100 original size A3

Plan status 02/2022. Non-binding plan copy. Subject to change without notice. The furniture shown is not part of the scope of delivery and serves only as a furnishing suggestion. All items shown are of a symbolic nature. The dimensions shown in this plan are rough dimensions and cannot be used for ordering built-in furniture - natural dimensions required! Room and apartment sizes and room heights may change slightly if necessary.

Exclusive Sale  
 Austria | **Sotheby's**  
 INTERNATIONAL REALTY

[www.schlossparkfreihof.at](http://www.schlossparkfreihof.at)  
[office@schlossparkfreihof.at](mailto:office@schlossparkfreihof.at)

A project by **SORAVIA**